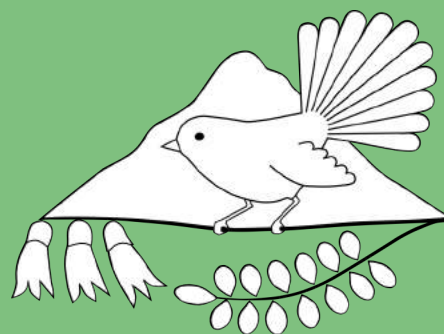


TAURAROA AREA SCHOOL

PROSPECTUS



www.tauraroa.school.nz



Vision: To be the best we can be

FROM THE PRINCIPAL

Kia ora! Welcome to Tauraroa Area School.

Every student at our school enjoys a friendly, safe, caring, learning-focused environment. The size of our school (511 students) is small enough to allow flexibility to meet the needs of every student, yet large enough to allow us to provide outstanding opportunities and resources.

Catering for all Primary and Secondary year levels (Years 1-13), the school is able to foster close links with families and provide students with a seamless education avoiding the disruptions experienced by most NZ students at years 7 and 9.

Our excellent academic results consistently show Tauraroa Area School is meeting the learning needs of students. Just as important, however, is our commitment to equipping our students to become well-rounded, confident and contributing citizens, who are prepared to meet the complex challenges of 21st century living. Our Cornerstone Values programme plays an important role in this regard.

We offer a modern and well-equipped campus, located in a beautiful rural setting, in Whangarei District. An extensive (and ongoing) building programme in recent years has provided our students and teachers with outstanding facilities.

I look forward to having you join the Tauraroa family!

Grant Burns
Principal

CONTACT

Phone: (09) 432 2643

Postal Address:
PO Box 36
Maungakaramea
Northland, 0146

Website:
www.tauraroa.school.nz

Email:
general@tauraroa.school.nz

Physical address:
Cnr Omana & Tauraroa Rd
Maungakaramea
Northland



School vision - "To be the best we can be"

VISION AND MISSION

Mission statement:

Tauraroa Area School will provide an environment in which all students and staff are challenged and supported to reach and extend their potential in a wide range of contexts.

Our vision is for young people who are:

Confident

- Positive in their own identity
- Motivated and reliable
- Resourceful
- Enterprising
- Resilient

Connected

- Able to relate well to others
- Effective communicators
- Connected to the land and environment
- Contributing members of communities
- International citizens

Actively involved

- Participants in a range of life contexts
- Contributors to the well-being of NZ – social, cultural, economic and environmental

Lifelong learners

- Literate and numerate
- Critical and creative thinkers
- Active seekers, users and creators of knowledge
- Informed decision makers

Tauraroa Area School will uphold and promote the cornerstone values:

**RESPONSIBILITY, KINDNESS, RESPECT, DUTY, HONESTY,
CONSIDERATION FOR OTHERS, COMPASSION AND OBEDIENCE.**

SENIOR MANAGEMENT TEAM

Principal	Grant BURNS
Associate Principal, Director of Learning & Teaching	Allison RANGI
Deputy Principal (Years 0-8)	Andy MOUAT
Deputy Principal (Years 9-13)	Ross MCCARTNEY

BOARD OF TRUSTEES

Chairperson	Rachel MASON
Deputy Chairperson	Susan KARELS
Staff Representative	Rachel HILL
Student Rep	Carlisa MCCAROLL
Other members	Mat ALFORD, Bertus BOTHA, Marlie LOOTS, Lorna DOUGLAS, Victoria KURUPO

DEANS

Year 1 - 3	Ruth PHILLIPS, Year 2 Teacher
Year 4 - 6	Maree MIDDLEMAS , Year 5/6 Teacher
Year 7 - 8	Paula ASHCROFT, Teacher 7PA
Year 9 - 10	Natalie Hydes, Y9 Science Teacher, Health & Safety
Year 11	Ray PETRIE – HOD PE & Health
Year 12	Andrea CAMERON- HOD Sport, Trades, STAR & Gateway
Year 13	Julie CHAPLIN—Careers

TEACHING STAFF

Adrienne KYD—HOD Technology
 Al KIRK—HOD Maths
 Anita MAGEE—Maths
 Anna PASCOE—Guidance Counsellor, English
 Bruce COLE – Statistics, Calculus, Physics
 Chris JENKINS—Social Sciences, Science, Health
 Christine ALFORD—New Entrant
 Christine ALLAN—Science
 Clarissa TANA—SENCO
 Debbie GRAHAM—Music
 Derek HOPPER – HOD Music
 Donna MOST—Year 4/5
 Gayle PERRY—PE, Health
 Glenn MCDONALD—Year 8
 Helen TOR—HOD English
 Jeremy HILL – VPI
 Joelle MCCORMICK—Year 8
 Judy DORSET – Year 3/4
 Justin DOWNES – HOD Art
 Kathie BROWN—English
 Keith CAVE – Technology, Specialist Classroom

TEACHING STAFF continued ...

Leon VAN ROOYEN—Technology
Mary HACKETT – Learning Support Unit
Meaghan GREEN—Year 1
Naomi FOOT—English, Social Sciences
Paul KELLY—Science
Paul MEPHAM—HOD Languages, Maori
Pauline CANT—Year 7
Rachel HILL – HOD Science
Sandra GUEST – Technology
Selma OWBRIDGE—Year 5/6
Sue HOWES—HOD Social Sciences, OTTL
Tabitha KAISER – HOD Drama

SUPPORT STAFF

International Student Manager
Principal's Secretary, Admin Manager
Finance Officer
Administration Support
Caretaker Property Manager
Groundsman
Gateway Coordinator
Librarian
Library Assistant
Sports Coordinator
Teacher Aides

Janine BURNS
Elaine PIENAAR
Anna LEAMAN
Alice BARBER
Greg WALKER
Nook ANDREW
Sara READE
Maria QUIN
Delwyn MORRIS
Julie TARR
Abigail ASHCROFT
Crystal HUNT
Julie GRINDLE
Fiona SNEDDON
Maria WHITAKER
Diane KAISER
Karen WILLOUGHBY
Margaret LEADER
Nikki SEAMAN
Finn PARKER



INTRODUCTION AND WELCOME

The school was founded in 1958 as a District High School, becoming Tauraroa Area School in 1976. We are proud to continue the tradition of providing a high quality education in a caring and supportive environment for students from Year 0 – Year 13.

Tauraroa Area School is sited in a rural setting, 22km from Whangarei, and 4km from the township of Maungakarama. Facilities include a gymnasium, heated swimming pool, technology areas, two computer rooms, 'Astroturf' courts, specialist classrooms and community library.

Skilled and dedicated staff ensures that every student is valued and cared for. Students are encouraged to reach their potential in all fields of endeavour – academic, sporting and cultural. In all activities students build a sense of self worth through achievement. As an Area School, we provide a unique environment for students' growth and development, providing continuous learning pathways encompassing primary, intermediate and secondary levels.

NCEA success rates are consistently above NZ averages, providing lifelong opportunities for our students.

Tauraroa Area School strives to meet the changing needs of our times by

providing continuous professional development for staff and top quality buildings and equipment.

The school and community offer a wide range of sporting activities, including clay bird shooting, squash, netball, rugby, football, swimming, and hockey. Students are encouraged to become involved. Events such as swimming sports, athletic sports, top waka and cross country feature in the school calendar. All students are required to participate for their house in these events. Students are encouraged to participate in the annual Northland Area School sports tournament and sports exchanges with other schools.

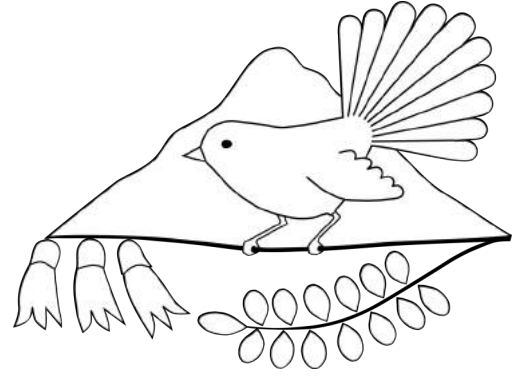
Many other activities take place including camps, field trips, music groups, speechmaking, debating, Kapa haka, Mathex, drama and environment club.

Specialist music tuition is offered in piano, guitar, woodwind, brass and drums. A range of performance opportunities and groups exist for students.

The annual Country Day still thrives in our rural community, giving students the opportunity to raise and show calves, lambs and kids.

CORNERSTONE VALUES

Tauraroa Area School has adopted the Cornerstone Values approach to learning and teaching. One value is highlighted every term and is reinforced in every subject at all year levels. Parents are encouraged to highlight the current term's value through practices in the home.



The eight values have been found by researchers to be common to many religions and cultures over a long period of time. As a school, we believe that by clearly articulating, teaching and actively demonstrating the Cornerstone Values, our students will be equipped to deal with the complexities and uncertainties of life beyond school.

The eight Cornerstone Values are:

RESPONSIBILITY, KINDNESS, RESPECT, DUTY, HONESTY, CONSIDERATION FOR OTHERS, COMPASSION AND OBEDIENCE.



YEARS 0 TO 8

Through engagement in the eight learning areas of the New Zealand Curriculum, our students encounter the essential principles, values and key competencies to support success in their senior schooling years and life beyond the classroom. The core programme is delivered by home room teacher(s), with specialist teaching in areas such as PE, Technology, Te Reo and The Arts where timetabling allows. Where possible, units of work are integrated into multi-disciplinary studies. All pupils from Year 0 onwards have experience with computers. An independent learning approach to classroom work encourages high levels of accountability, motivation and self-management in our students. A Reading Recovery programme operates for the pupils who, after their first year at school, have shown that they have not made the progress expected in all aspects of their reading. The number of students entering this programme is dependent on Ministry funding.

YEARS 9 & 10

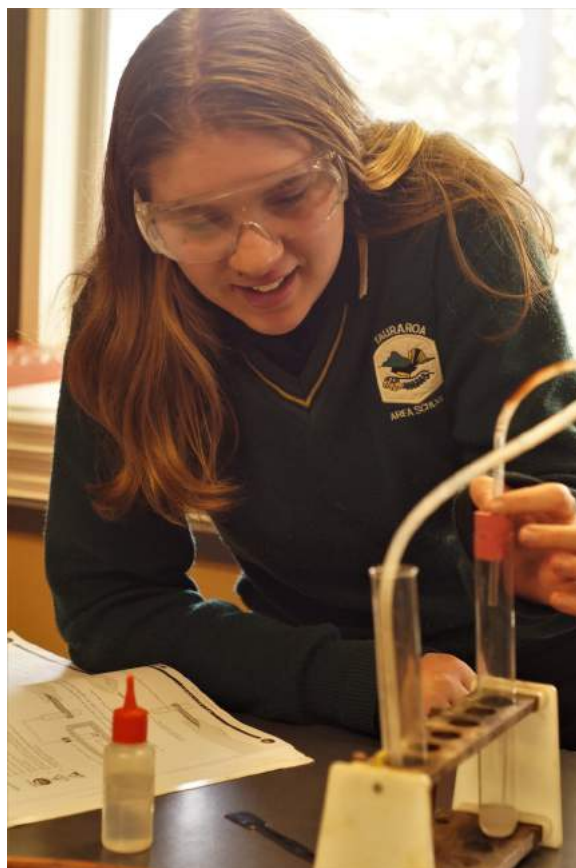
All pupils study English, Science, Mathematics, Social Studies, Health and Physical Education. The remaining curriculum areas will be

covered by a multi course structure of part year modules.

YEAR 11

Students take six subjects to present for the National Certificate in Educational Achievement (NCEA) Level 1.

Courses in English, Mathematics and Science will be compulsory with three further subjects chosen from: Economics, Geography, Health, Graphics (with CAD), Hospitality, Information Management, Physical Education, Materials Technology, Music, Textiles, Drama and Visual Art. The list of available subjects may change, depending on student demand.



YEAR 12

Students take up to six subjects towards NCEA Level 2. Subjects can be chosen from: Biology, Chemistry, Digitech,, Geography, Graphics DVC, Health, Hospitality, Gateway/ Trades, Physical Education, Physics, Maths(statistics or calculus), Music, Tourism, Visual Art and Young Enterprise (Business Studies). This list is not, however, exclusive. Students will be able to make up a course from Level 1 and 2 subjects, or with Online Learning subjects, after consulting with their Dean, Andrea Cameron.

YEAR 13

The following subjects are offered at Year 13: Biology, Calculus, Chemistry, Digitech, DVC (Graphics), English, Gateway/Star/Trades, Geography, Health, Music, Physics, Physical Education, Statistics, Te Reo, Tourism, Visual Art and Young Enterprise (Business Studies). A variety of subjects are offered through E-Learning (correspondence). Credits may be available in Level 2 and 3. Students can consult with their Dean, Julie Chaplin, to help them make choices for their final year at school.

*We are happy to tailor courses to suit individual student's needs and interests.
Please just ask!*



GATEWAY

Year 11-13 students may gain work experience with placements in occupations of their choice. Students may undertake work in a wide range of careers, trades and professions, gaining NCEA Credits. The aim of this programme is to provide students with workplace experience, industry insight and skills which will help them to make a more informed career pathway decision in the future.

STAR (Secondary-Tertiary Alignment Resource)

STAR funding allows senior students to complete short courses of study to gain NCEA Credits in a wide range of areas, as diverse as First Aid, Defensive Driving, barista skills and child care. These courses are provided by educators such as private training organisations and North Tec.

VOCATIONAL PRIMARY INDUSTRIES (VPI)

A rural skills based course for Year 12 students provides opportunities to gain Level 2 and Level 3 NCEA. Students undertake practical farm skills with Taratahi Farms and other providers, in addition to career planning and creating their curriculum vitae. Students also learn how to budget and cook in preparation for their adult life.

Te Tai Tokerau TRades Academy (TTTA)

Tauraroa in conjunction with TTTA and Northtec offer a range of quality tertiary experiences. Including cookery, constructions, automotive, hair and beauty, health sciences and Art Design. These programmes take place for 1 or 2 days a week. The students are provided support to ensure they remain up to date with their school work. Students are refunded fully for travel from home to the course.

EXTRA AND CO-CURRICULAR ACTIVITIES

A range of opportunities allows Tauraroa Area School Students to achieve success beyond the classroom.

These include:

- Winter and summer sports
- Duke of Edinburgh Hillary Award
- School productions
- Music groups - Concert Band, Jazz Band, Choir, Rock Bands
- School camps
- Debating
- Kapa haka

The official school suppliers are **Bethells (The Strand) and Northland Schoolwear (Kamo)** . All uniform items have the school logo. Hair should be clean, neat and tidy and avoid extreme styles. Second hand clothing is available. Please arrange with the office staff for a suitable time to view/fit.



BOYS AND GIRLS: YEARS 0-6

A green uniform polo shirt is required for ALL primary students. This may be worn with black shorts, skirt, track pants or trousers. A zipped plain green polar fleece can be purchased from The Warehouse or the Tauraroa polar fleece and jacket from our providers. A black thermal top may be worn underneath the polo shirt.

GIRLS: YEARS 7 - 10

Black dress skirt (2 styles available) of length just above or below the knees (with logo); black shorts or trousers (with logo). A skirt with an elastic insert is available to order. White or black polo shirt with school logo & striped collar. A long sleeved matching colour thermal may be worn under the polo shirt. Uniform (bottle green and gold) polar fleece or school jersey. White or black socks or black tights. School jacket is optional.

BOYS: YEARS 7 - 10

Shorts or black trousers (with logo). White or black polo shirt with school logo & striped collar. A matching coloured thermal may be worn under the polo shirt. Uniform (bottle green and gold) polar fleece or school jersey. Plain white or black long or short socks. School jacket is optional.

GIRLS AND BOYS: YEARS 11-13

As for Y7-11 with optional white uniform blouse/shirt with school logo.

YEAR 13 STUDENTS AND YEAR 12 PREFECTS can purchase a plain black dress jacket (girls) or blazer (boys) from the uniform suppliers.

MAKE-UP AND FACIAL HAIR

No nail polish is to be worn

No jewelry is to be worn, with the exception of up to a maximum of four small studs in ear(s) and/or a single, small nose stud.

Other forms of body piercing are not permitted.

Young men are expected to be clean shaven.

Makeup is to be discrete and natural in appearance.

SHOES

Plain black shoes or sandals with ankle straps. A 5cm maximum height restriction applies. NOTE: For safety reasons, the wearing of enclosed shoes in technology and science classes is required.

HATS

Sunhats are compulsory for all outdoor activity for students in Years 0-8 in Terms 1 and 4 and strongly recommended for all other year levels. Bottle green, wide brim or bucket style hats are available from the school. Plain black peak caps may be worn in Years 7-13.

A black beanie with school logo (2 styles available) or plain black beanie may be worn outside in cold weather, in Terms 2 and 3.

SCARF

During periods of cold weather, students will be permitted to wear a PLAIN BLACK scarf or the Tauraroa Area School scarf (available from the school office).

PHYSICAL EDUCATION

T-shirts and shorts or tracksuit pants are to be worn during Physical Education classes. Sneakers are to be worn when using the 'Astro-Turf' courts. Everyday uniform clothing is not appropriate. T-shirts that leave the shoulders and/or midriff bare, or are 'low-cut' are NOT acceptable. All students MUST tie back long hair. Swimming caps are recommended for students when in the swimming pool. The wearing of rash vests is encouraged.

WEBSITE & FACEBOOK

The school website is regularly updated and developed to provide current information about the school. The address is www.tauraroa.school.nz .

Information is also available on Facebook: Tauraroa Area School, Tauraroa Area School Sports and Tauraroa Area School International.

BOARD OF TRUSTEES

The Board of Trustees governs the school. After consulting with the general school community, the Board sets policies and agrees to procedures that are in accordance with the school's Charter. Copies of the Charter and school policies are available at the school office or may be emailed on request. The Board is elected by parents and caregivers and meets approximately once per month. Board meetings are open to the public and will be advertised in the school newsletter.

NEWSLETTER

A newsletter is issued monthly. Community members may place casual notices and advertisements as long as they are sent in to elaine.pienaar@tauraroa.school.nz prior to publication. The newsletter

is an official method of communication to parents. Current and archived newsletters are available on the school website www.tauraroa.school.nz.

PROGRESS REPORTS

Reports are issued twice each year. Written reports are issued at the end of term two and at the end of the year. An opportunity for parents to meet and discuss the year ahead with subject teachers is given in term one. Parents are encouraged to contact teachers at any time to discuss their children's progress.

EXAMS

Y11 - 13 students sit internal school exams in September and have external exams in November.

TUCKSHOP

School groups frequently run food stalls for fundraising.

TEAM UNIFORMS

TAS team uniforms are worn by all teams. A small rental is charged to cover laundry costs.

SCHOOL MUFTI DAYS

Clean and tidy mufti may be worn. Clothing advertising alcohol, illegal substances or any messages or images inappropriate in a school setting will not be permitted. Makeup and jewellery may be worn on mufti days. Any jewellery worn is done at the students' own risk. Teachers reserve the right to ask students to remove jewellery deemed inappropriate or dangerous for a particular activity or if health or safety issues arise.

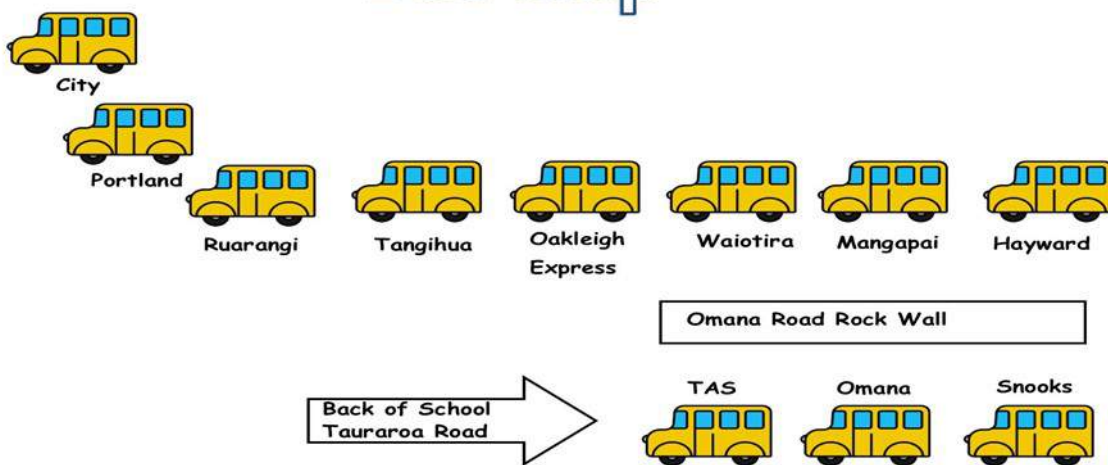


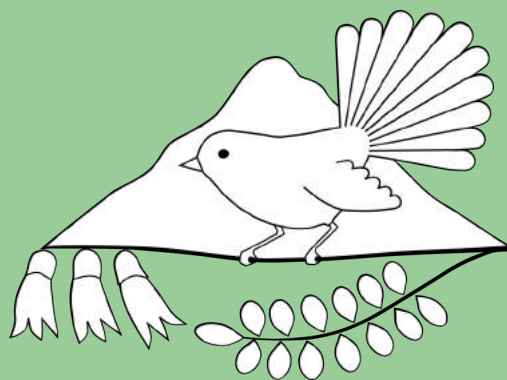
BUS INFORMATION

Tauraroa Area School is well served by a network of free Ministry of Education bus runs and also fare-paying services. Fee-paying services run from Whangarei City, Otaika Valley and Portland. Families with more than one student travelling on a paid route may be eligible for subsidies from the school. Information provided is subject to change. Please confirm with the relevant bus company should you have any question

Ritchies Bus services 09 4394902 Whangarei Bus services 09 438 6005

Bus Map





www.tauraroa.school.nz